

Telehandlers

TH 412 TH 625



**WACKER
NEUSON**



**Keep the topic of
productivity extremely high.**

The compact telehandlers by Wacker Neuson.

Combine the advantages of a loader and fork lift in one machine.
The compact telehandlers by Wacker Neuson.



COMPACT VALUES FOR MORE PERFORMANCE.

"This completely new loader concept has me really excited. I was not even aware that such a compact machine can be so powerful. The TH 412 is a great support for the day-to-day work in our company."

Paul Krüger
Horticulturist, Germany



Every centimeter used sensibly.
Every detail optimized.

Friction connection between man and machine. Driver's canopy, pulled down windows and a suspended comfort seat provide clarity and security. And just a joystick instead of a confusing lever.

Tailor-made for indoor work. With 1.94 meters of clearance height and 1.56 meters of width, the TH412 can develop its full power, even in tight spaces. Also in this regard: it is a genuine Wacker Neuson.

Many active sources of power. Power take-off shaft, 3-point rear hydraulics and high flow power (optional) for extra hydraulic performance: everything has its place.



One drive for more maneuverability. Hydrostatic all-wheel drive, an inside radius of just 821 mm and a travel speed of up to 20 km/h: this gets mobility and agility going.

Based on traditional values. Compact dimensions, intelligently controlled, comfortably equipped and entirely in the tradition of Wacker Neuson: long-established quality designed to be future-proof.



A telehandler with power. With a maximum lifting height of up to 4.5 meters and a load-bearing capacity of 1,200 kg, it can move a great deal and lift a lot. The mechanical quick-change system for attachments makes it particularly versatile.

TH412

TH412

Consistently practical
in every detail.

The interaction of lifting height, width and machine power is unique in this form. That is why we built it. Just like that.



1

With a pass of your eyes, you can see the ergonomics and clear arrangement of the machine.



With a step, you can get into the machine cockpit upright. The low entry height makes it possible.



821 mm
turning radius

1 With a drive

you can bring material and the TH412 comfortably and safely to the site of application on a trailer.

2 With a glance

at the clearly arranged controls, all of the important data can be understood.

3 With a hand

you can control all functions and movements of the machine by using the joystick.

TH 412 factors:

- Ideal ratio of lifting height, width and machine performance.
- Extremely small turning radius of just 821 mm.
- Easy to transport (2.5 tons).
- Lifting height up to 4.5 meters for loads up to 1.2 tons.



2



3

2x2-meter concentrated
Wacker Neuson power in an
all-rounder of the extra class.

TH625

Lift 2.5 tons of payload nearly 6 meters high. With this performance data, this machine is recommended both for loading as well as for stacking. That is professional class.

The cabin: compact, but not tight. The adjustability of the steering column and seat, the large legroom and the convenient control via the joystick make work easier.

Ideal dimensions for agile work. With an overall height of less than 2 meters and with 1.96 meters of loader width, the TH625 is the ideal (indoor) all-rounder.



Powerful engine, quick service. With 50kW, the TH625 is very well and economically motorized. In connection with the time-saving accessibility for maintenance and service, it is a powerful combination.



Three steering modes (optional) and high level of maneuverability. Best in class maneuverability – and always working from the ideal position ensures maximum productivity.

Low center of gravity for maximum stability. Even when transporting heavy loads over uneven terrain – the TH625 is and remains connected to the ground. In any situation.

TH625

Maneuverability is power: The new power on site simply moves more.

A 50 kW power machine in the 2x2 meter class – you are well equipped in any situation with this telehandler.



More spaciousness in a cabin that was developed according to the latest knowledge of safety technology and ergonomics.

More maneuverability when adjusting the steering column to the individual body size of the operator.



1 – 3 Three steering modes (optional) for top performance from the best position.

All-wheel steering: full maneuverability and power development while turning on a dime.
Front drum steering: for safe driving at higher speeds.
Crab steering: for precise maneuvering in tight spaces.

4 Perfect control

of the machine and functions by using a joystick of the latest generation.

5 Spacious legroom

for the operator supports fatigue-free work.

TH 625 factors:

- Power machine in the 2 x 2 meter class.
- Three steering modes (optional).
- Optimized ratio of lifting height, width and machine performance.
- 2.5 tons of payload can be lifted to nearly 6 meters height.



TH412

New sovereignty: Everything at a glance. Everything within reach. Everything in its own time.

The care lavished on the technical details makes the machine. The enthusiasm for working with it produces the result.

The compact telehandlers by Wacker Neuson are powerful and quick. They are also built with the person using them in mind, so that he or she can work with them efficiently and master every situation they find themselves in. The perfect all-round visibility, the practical layout of the controls and the easy access to the maintenance points underline the practically-orientated design.



Supreme cab comfort. The roomy comfort cab of the TH 625 is pure ergonomic design: generous, compact dimensions, individual adaptability, comfort layout and supreme functionality. A true cockpit, made-to-measure for every working day. Options with which to spoil yourself on the TH 625: air conditioning, radio, adjustable steering column, air-sprung seat and heatable cab windows.



1



2

1 Practical and maintenance-friendly.

The engine hood of the TH 412 is removable. This offers free access to the key components for all maintenance work.

2 Open for simplicity in service.

The engine hood of the TH 625 is self-releasing and opens wide by means of gas compression springs. A little comfort plus in the everyday working routine.

3 Full overview as a standard.

Unimpeded visibility of the tool attachment and working area facilitates concentration on the essential and helps ensure safe working.

4 Perfect handling.

The innovative joystick of the TH 625 with illuminated switches creates multi-functionality:

- Lifting / lowering
- Tilting and dumping
- Drive direction change
- Extending / retracting the telescopic boom
- Operating the third control circuit
- Operation of the differential lock



3



4

TH412

The new intelligence: The driver assistance system vls (Vertical Lift System)

A better work flow with certainty.

The vertical lift system has already proven itself well in the agricultural sector – our innovation has been awarded several times and also internationally with the silver DLG innovation award in 2011, the EIMA Technical Innovation Prize 2012 and the Equitana Innovation award 2013. These prizes do show how important the topic of safety is viewed as and evaluated.

The vertical lift system allows for a fluid work flow and supports working in a complex operator environment through a partially automated telescopic movement. The machine's stability is improved through the nearly vertical lifting and lowering movement.

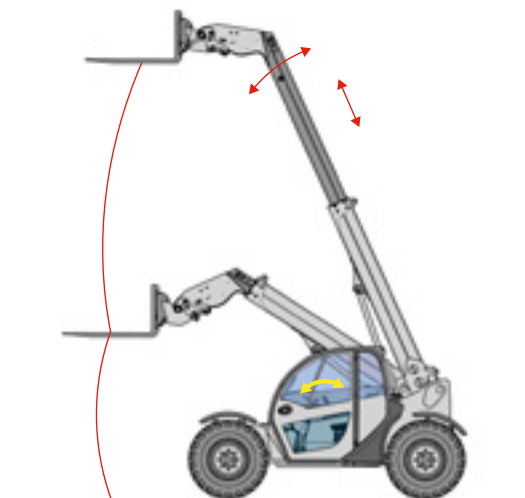
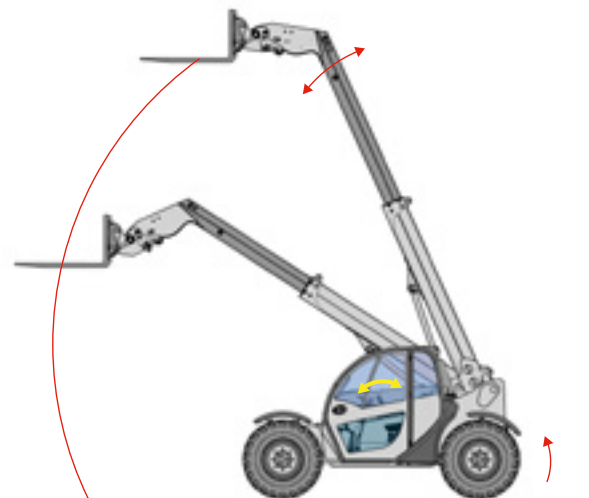
The fluid work flow, the avoidance of a reduced lowering speed for safety reasons and a facilitated machine operation increase the handling capacity of the machine. Experienced operators can work even faster and more safely with the vls. Inexperienced operators receive valuable support when lifting and loading. The vls function takes effect when lifting and lowering with the TH 412. For technical reasons, the vls was realized with the lowering function for the TH 625.



You can choose between
two different work modes:

State of the art. The machine reaches
the tilting limit when simply lowering.

vls driver assistance system. Nearly vertical
movement. Hardly any load torque displacement
in the longitudinal direction of the machine.



— Operating parameter — Response of the loading system



Bucket mode.

The bucket mode is designed for the efficient handling of all backfill materials. The ratio of the retracting motion to the lowering movement is designed so that the machine does not enter into the overload range, even under maximum payload.

Stacking mode.

The precise positioning of pallets or other stackable loads is also easily and safely performed manually with the compact telehandlers by Wacker Neuson. In stacking mode, the loading system is retracted at an angle of inclination of $> 40^\circ$ during lowering. At an inclination angle of $< 40^\circ$, the loading system only retracts if an overload situation is imminent. All functions can be overridden with the joystick.

TH412

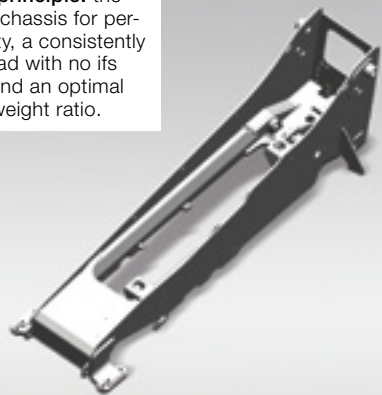
TH625

A safe decision: Progress and quality in every detail.

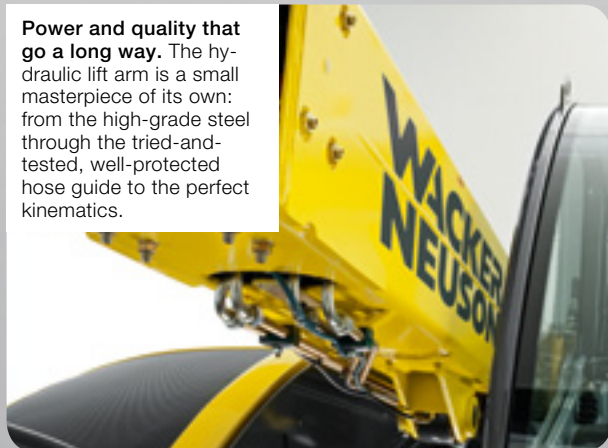
The experience and professionalism of Wacker Neuson make all the difference.

The robust and torsion-resistant frame, the key components from the world's leading manufacturers and the latest generation engines make them into something extraordinary. With the model TH625 as well as with the slim TH412. The electronically regulated hydrostatic drive ensures for exceptional driving performance and optimal efficiency. For additional traction, a 100 % differential lock is available as an option.

A proven principle: the one-piece chassis for perfect stability, a consistently high payload with no ifs and buts and an optimal power to weight ratio.



Power and quality that go a long way. The hydraulic lift arm is a small masterpiece of its own: from the high-grade steel through the tried-and-tested, well-protected hose guide to the perfect kinematics.



The hydraulic quick-hitch system. The connection between comfort, safety and utilization of the options.

- 1 Simply drive up to the attachment.
- 2 Through visual contact, connect and secure the equipment with ease.
- 3 Lock and unlock the equipment without having to leave the driver's seat.

That's all there is to it. This is how to make the most of the versatility of the compact telehandler – quickly and economically. And no time to lose.



Technical data.

GENERAL		
Shovel capacity (standard bucket) m³		
Weight (without attachment) kg		
Operating weight (with operator, bucket, filling) kg		
Turning radius of the tires mm		
Turning radius, standard bucket mm		
Total swing angle of the tool carrier °		
ENGINE		
Make / design system		
Power output (optional) kW/hp		
Max. torque Nm		
Displacement cm³		
Emissions		
POWER TRANSMISSION		
Drive unit		
Speed km/h		
Axles		
Overall oscillating angle °		
Differential lock		
Driving brake/parking brake		
Standard tires		
STEERING AND WORKING HYDRAULICS		
Functionality		
Max. steering lock °		
Working pump		
Flow rate (optional) l/min		
Pressure bar		
KINEMATICS		
Max. payload kg		
Lifting height of the bucket pivotal point mm		
Back tilt angle (bucket) °		
Empty angle (bucket up) °		
Payload at max. lifting height kg		
Payload at max. reach kg		
Lifting height at maximum load mm		
Reach at maximum load mm		
Max. reach (stacking) mm		
Raising/lowering lifting cylinder sec*		
Extension/retraction of extension ram sec*		
Fill shovel/empty shovel sec*		
FILLING VOLUMES		
Fuel tank l		
Hydraulic tank l		
Hydraulic system l		
ELECTRIC SYSTEM		
Operating voltage V		
Battery Ah		
Alternator A		
Starter kW		

TH 412

TH 625

0.43	0.85 – 1.8
–	4,730
2,530	–
2,607	3,670
3,398	4,500
148	150
Yanmar liquid-cooled	Deutz liquid-cooled
22.6/31 (29.6/40)	50/68
83 at 1,400 rpm	200 at 1,800 rpm
1,331 (1,496)	2,298
Tested and certified as per emissions standard level 3a	
Hydrostatic	Hydrostatic
0 – 7, 0 – 20	0 – 7, 0 – 20 (0 – 30 optional)
Planetary steering axles	Planetary steering axles
14	20
100 % in front and rear axle (optional)	100 % in the front axle (optional)
Disc brake on the universal joint shaft	Disc brake on the rear axle
10.0/75-15.3 AS	12.5-18 MPT04
Hydrostatic all-wheel steering with end position synchronization	
2 x 38	2 x 38
Gear wheel	Gear wheel
42 (75)	89
220	235
1,200	2,500
4,503	6,080
43	45
31	40
1,200	1,800
440	800
4,503	4,850
1,040	1,260
2,290	3,156
6.2/5.1	6.0/4.2
5.1/3.9	5.6/3.8
2.6/2.4	3.0/2.5
25	100
40	75
45	130
12	12
77	74
55	80
1.7	2

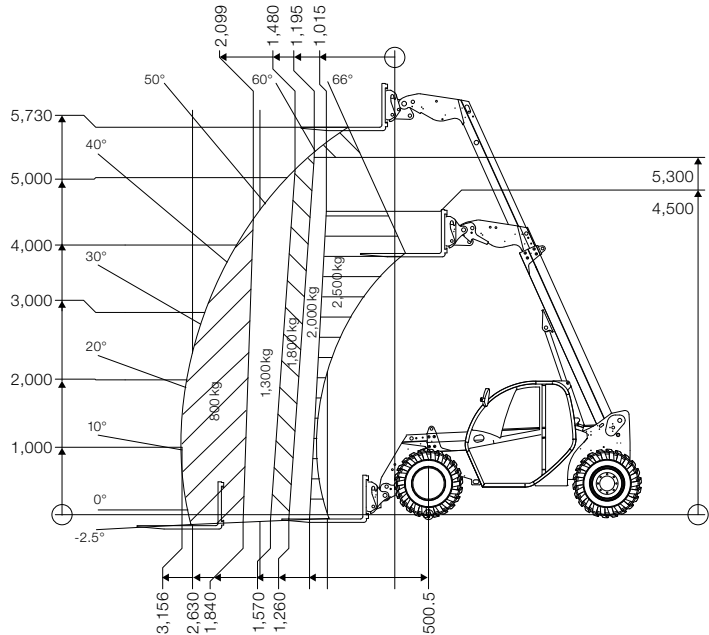
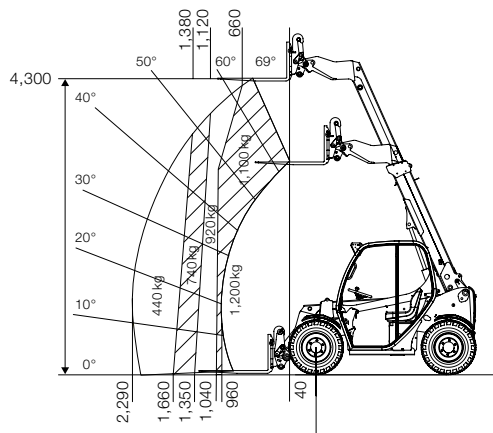
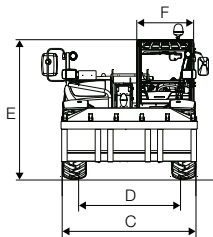
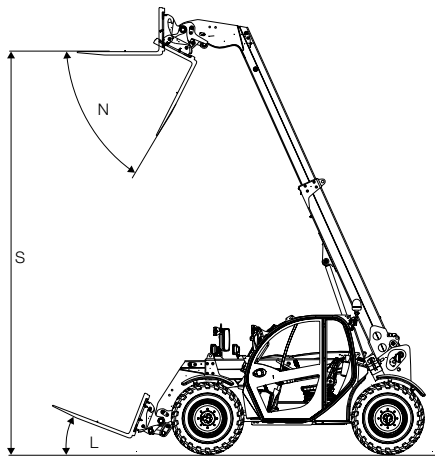
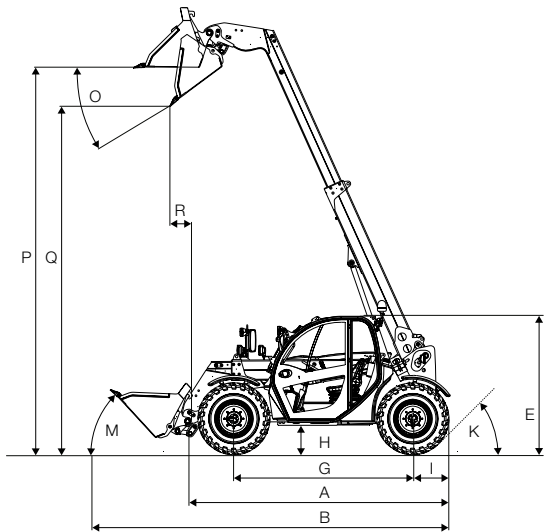
STANDARD EQUIPMENT AND OPTIONS	
DRIVE	
Hydrostatic all-wheel drive	
Planetary steering axle PAL 1155/PAL 1720	
Diesel engine 22.6 kW/31 hp	
Diesel engine 29.6 kW/40 hp	
Diesel engine 50 kW/68 hp	
Travel speed 0 – 20 km/h	
Travel speed 0 – 30 km/h	
3 steering modes (all-wheel, front-wheel and crab steering)	
Low-speed control and manual throttle	
Load stabilizer	
TYRES	
Tires 10.0/75-15.3 AS ET-40	
Tires 12.5-18 MPT-04	
HYDRAULICS	
Joystick	
Joystick with third comfort control circuit	
Proportional operation of the third control circuit and telescoping	
Single-acting high flow	
Front DN10 hydraulic connection	
Tilt ram lock	
Unpressurized reflux	
Lowering brake valve	
Pre-heating engine + fuel + hydraulic oil 230 V	
Fuel filter with transparent oil level glass	
Three-point rear receptacle	
Power take-off shaft 540 1/min	
DRIVER'S CABIN	
Driver's canopy ROPS and FOPS-approved (right window)	
Front windscreen with wiper, rear windscreen	
Cabin with heating, ventilation and ROPS and FOPS-approved windscreen wipers (fully glazed)	
Cabin window right and rear heatable with automatic shut-off	
Air conditioning	
Radio installation setup / radio system	
Working light on the driver's cabin	
Working light on the telescopic arm	
Comfort seat with safety belt	
Comfort seat with safety belt, air-suspended	
Adjustable steering column	
Fuel display	
Operating hours meter	
ELECTRICS	
Plug-socket for front-end attachments	
Battery circuit breaker	
MISCELLANEOUS	
vls (Vertical Lift System)	
Reversing warning system	
Mechanical quick-change system for attachments	
Hydraulic quick-change system for attachments	
Rotary beacon	
TÜV-report for road travel	
Data confirmation	
Shunting coupling hitch	
License plate illumination, including license plate holder in the front	
Telematic 12 – 48 months	
Custom paint finish in RAL	
(Fully automatic) central lubrication unit	

TH 412

TH 625

●	●
●	●
●	–
○	–
–	●
●	●
–	○
–	○
○	○
–	○
●	–
–	●
HYDRAULICS	
●	●
○	●
–	●
○	–
●	●
–	○
○	○
●	●
○	○
○	–
○	–
DRIVER'S CABIN	
●	–
○	–
○	●
–	○
–	○
–	○
●	●
○	○
●	●
○	○
●	●
ELECTRICS	
○	○
●	○
MISCELLANEOUS	
●	●
○	○
●	●
○	○
○	○
●	–
–	●
●	○
○	○
○	○
○	○

● Series ○ option – not possible



TH 412

TH 625

DIMENSIONS		
A	Length, including tool frame mm	2,916
B	Length with standard bucket mm	3,879
C	Max. width mm	1,560
D	Gauge mm	1,296
E	Height to the canopy mm	1,940
F	Inside width of the cabin mm	662
G	Distance between wheels mm	1,920
H	Ground clearance mm	290
I	Distance from the center of the rear wheel to the rear mm	391
K	Rear approach angle °	32
L	Tilt angle of pallet fork down °	8
M	Tilt angle of standard bucket down °	44
N	Tilt angle of the pallet fork up °	70
O	Tilt angle of the standard bucket up °	31
P	Overhead loading height with standard bucket mm	4,125
Q	Layer thickness with standard bucket mm	3,590
R	Backfill width with standard bucket mm	543
S	Stacking height mm	4,300

TH 412

Load diagram (with LSP 500 mm)

TH 625

Load diagram (with LSP 500 mm)

All technical information in this brochure refers to the series models tested under Central European operating conditions and describes its standard functions. The equipment, its functional modes as well as the accessories depend on the respective model, product options and on the regulations specific to the selling country. Figures may display unmentioned products or those unavailable in series production. The descriptions, illustrations, indication of weights and technical data are non-binding and correspond to the state of the art at the time of printing. We must reserve the right to make changes in the area of structure, equipment, optics and technology without notice due to the constant development of products. If you need special functions that are only available when using additional components and/or are only available with special overall conditions, then talk to us! We are happy to answer your questions and will provide you with information as to whether and under what product and environmental conditions special functions are represented. For concerns regarding the load-carrying capacity or the mode of operation of our products due to special circumstances, we recommend test work under safe overall conditions. Despite the utmost care, we cannot rule out deviations of figures or dimensions, calculation errors, printing errors or omissions in the brochure. We therefore assume no liability for the accuracy and completeness of our information in this brochure. We guarantee the proper functioning of our products as a part of our general terms and conditions. As a principle, we do not assume any additional guarantees. A liability in addition to that in our general terms and conditions is excluded.

IN DEMAND WORLDWIDE –
PRODUCED IN GERMANY.

The compact telehandlers by Wacker Neuson are manufactured in ultra modern production locations in Germany. The factories are development and production facilities of numerous innovations in the compact machine sector.

PRODUCTION LOCATIONS
OF THE WACKER NEUSON GROUP

- 1 Milwaukee, USA
- 2 Norton Shores, USA
- 3 Korbach, Germany
- 4 Pfullendorf, Germany
- 5 Reichertshofen, Germany
- 6 Linz, Austria
- 7 Kragujevac, Serbia
- 8 Manila, the Philippines



The value wheel of
Wacker Neuson: our customers’
success is at our core.

We win over with the values of a medium-sized, family-owned company that is publicly traded. With the strength and expertise of a globally active organization. With people that meet our motto every day with life and ideas.

We believe in quality, innovation, performance and character. And we believe in the sustainable success of our customers, whom everything ultimately is about.





**WACKER
NEUSON**



www.wackerneuson.com